

Central Iowa Model A Ford Club  
Available Tools for use by CIMAC Members Only  
To Borrow or to Donate Tools to the Club, Contact Willie Priaulx

Piston ring compressor



Hood louver straightener (handmade)



Light Switch Spider install tool (handmade)

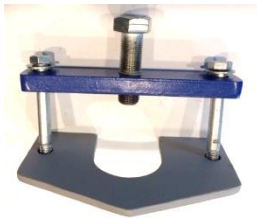


Gas Gauge wrench



Steering wheel puller

Gray 2" plate- 1928-29, White 3" plate- 1930-31



2 ton Floor Jack



Spark Light – Coil Polarity tester



C Spark – Coil Spark tester



Rear Spring Spreader



Frame Spreader



New Tools – 7/21

Front hub inner & outer race installer



Front hub inner & outer race puller



Duby Wheel Alignment Gauge



Cowl light center punch



Brake shoe centering tool



Adjustable Reamer - .42 to .94  
Front brake shaft - .559,  
Distributor - .50, Pedal shaft - .874



Distributor or Oil Pump Bushing Reamer  
Long enough to align both bushings at once.



Pittsburgh Torque Wrench, 1/2" drive



Head nut torque tool



Camshaft nut wrench



Flywheel alignment checker



Gear shift lever spring tool



Clutch disc alignment tool



Gas tank filler screen tool



Distributor puller



K.R. Wilson Rear Axle Race Puller



Carburetor Venturi puller



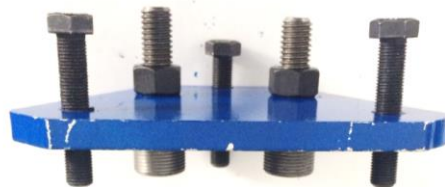
Door hinge pin removal tool



Engine lift rings (2)



Head Puller (set)



Head Stud Drill Out Tool



Tie Rod/ Drag Link socket, 1/2" drive, 15/16" slot



Brake & Clutch Pedal Bushing Driver



Distributor or Oil Pump Bushing Driver



Spring & Perch Bushing Driver (2 steps)  
Spring Bushings, Perch Bushings,  
Rear Brake and Camshaft Bushings.



Steering Sector Bushing Driver  
For both 7 and 2 tooth steering boxes.



New Tools – 11/21

Reamer Wrench Handle 1/4 to 3/4"



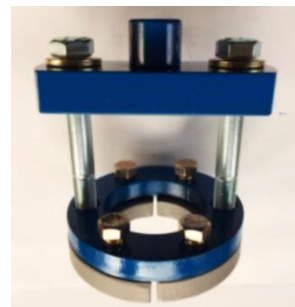
Ratchet Nut Wrench



Capacitance Meter



Rear Hub Puller  
Gray plate- shoulder hub 1928  
White plate- groove hub 1929-31



King Pin Bushing Reamer / Driver  
Size .814"  
Donated 4/22 by Joe Lamb



Pinion Bearing Nut Wrenches (Pair)  
Part # 6400  
Donated 10/22 by Curt Carlson

